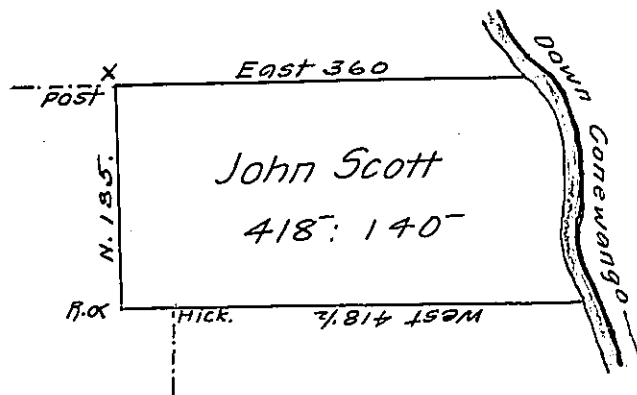


York State



Courses on the River

- ~~S. 30° E. 20~~
- ~~S. 4° E. 70~~
- ~~S. 27° W. 48~~
- ~~S. 60° E. 29~~
- S. 36° E. 22.
- S. 60. E. 29
- S. 27. W. 48
- S. 4. E. 70
- S. 30. E. 20
- 189

William Scott
Pg 179

Surveyed on the 6th day of July 1795 the above described Tract of Land in district No. 6, in pursuance of a Warrant to John Scott dated 20 December 1793 containing Four Hundred ^{& 18} ^{140^P} Acres & allowance of Six per Cent.

Sam! Nicholson D.S.

To Daniel Brodhead Esqr.
Surveyor General

IN TESTIMONY that the above is a copy of the original remaining on file in the Department of Internal Affairs of Pennsylvania, made conformably to an Act of Assembly approved the 16th day of February 1833, I have hereunto set my hand and caused the Seal of said Department to be affixed at Harrisburg, this first day of March 1907

Isaac Brown
Secretary of Internal Affairs.